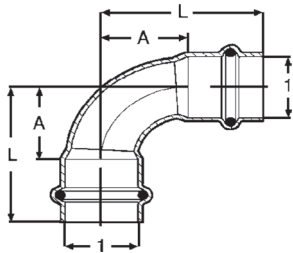


# Dimensional Documentation

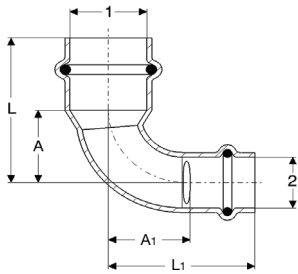
**viega**

## ProPress®



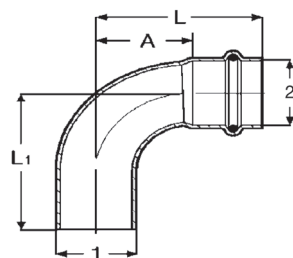
Copper Elbow 90° P x P - Model 2916

Part Number	Size	A (in)	L (in)
	<b>1</b>		
77317	1/2"	0.75	1.50
77322	3/4"	1.04	1.94
77327	1"	1.32	2.23
77332	1 1/4"	1.65	2.68
77337	1 1/2"	1.98	3.40
77342	2"	2.54	4.13



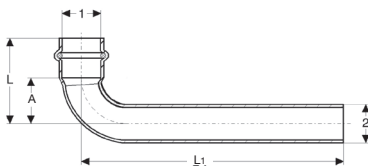
Copper Reducing Elbow 90° P x P - Model 2916.3

Part Number	Size	A (in)	A1 (in)	L (in)	L1 (in)
	<b>1 2</b>				
77325	3/4" x 1/2"	0.91	0.95	1.81	1.69
77330	1" x 3/4"	1.21	1.30	2.11	2.21



Copper Elbow 90° FTG x P - Model 2916.1

Part Number	Size	A (in)	L (in)	L1 (in)
	<b>1 2</b>			
77347	1/2" x 1/2"	0.75	1.50	1.54
77352	3/4" x 3/4"	1.04	1.94	1.98
77357	1" x 1"	1.32	2.23	2.27
77362	1 1/4" x 1 1/4"	1.65	2.68	2.76
77367	1 1/2" x 1 1/2"	1.98	3.40	3.48
77372	2" x 2"	2.54	4.13	4.21



Copper Elbow 90° FTG x P - Model 2947

Part Number	Size	A (in)	L (in)	L1 (in)
	<b>1 2</b>			
77353	3/4" x 3/4"	1.02	1.93	5.98